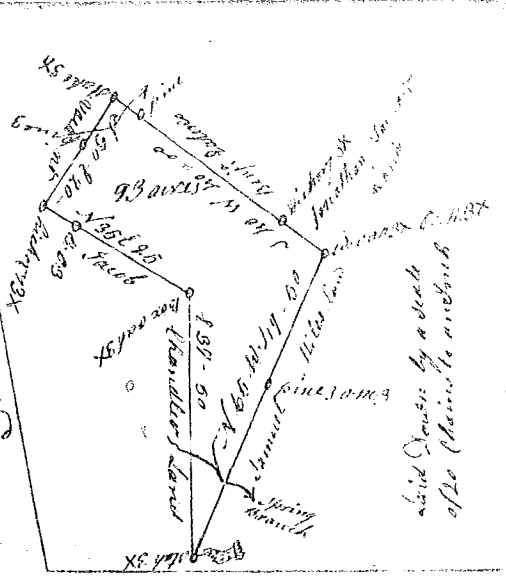


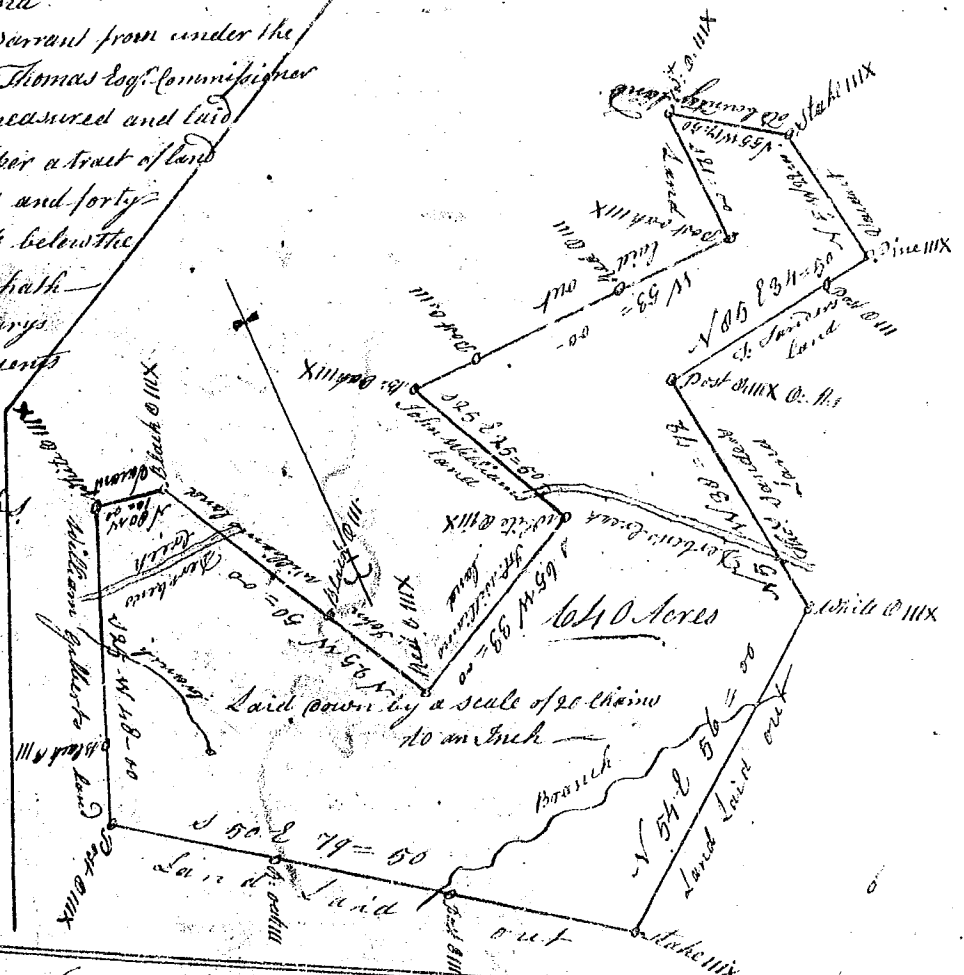
96  
 Ninety Six District  
 South Carolina

Below the Indian Boundary Line  
 Pursuant to a warrant from Under the hand and seal  
 of John Thomas Esq. Commissioner of Locations, bearing date  
 June 1<sup>st</sup> 1784, I have admeasured and laid out unto  
 Jacob Chandler a Plantation or Tract of Land containing  
 Ninety Three acres lying on a small branch of bushy river  
 Waters of Saluda River bounded to N. E. by Jacob Chandler's  
 Land to the N. W. by Samuel Mills Land to S. W. by Jonathan  
 Taylor's Land and to the East by Vacant Land, and  
 hath such shape and marks as the above plot Represents  
 Surveyed June 11<sup>th</sup> 1784 Certify'd by me B. Waters D. L.  
 Recorded the 28<sup>th</sup> day of August 1784



State of South Carolina  
 Pursuant to a warrant from under the  
 hand and seal of John Thomas Esq. Commissioner  
 of Locations, I have admeasured and laid  
 out unto Alexander Harper a tract of land  
 containing six hundred and forty  
 Acres on Terben's Creek below the  
 Indian Boundary, and hath  
 shape, Marks and Boundaries  
 as the above plot Represents  
 Surveyed the 17<sup>th</sup> day  
 of June 1784.

Robert Hanna D.  
 Recorded the 21<sup>st</sup> of August 1784  
 D. L. to Alex. Harper



State of South Carolina Ninety Six District  
 Below the Indian line, Pursuant to a warrant from under the hand  
 and seal of John Thomas Esq. Commissioner of Locations, on the north  
 side of Saluda River bearing date the 17<sup>th</sup> June 1784, I have admea-  
 sured and laid out to Joshua Smith a tract of Land containing one  
 hundred acres lying on the south side of Sugar Hill, bounded  
 to the North west by Mich. Young's land, and to the North East by  
 Benj. Wofford's land and to the North by said River, and hath  
 such other shape and Marks as the above plot Represents.  
 Surveyed June 26<sup>th</sup> 1784 by me Phil. Waters D. L.  
 Recorded the 28<sup>th</sup> day of August 1784

